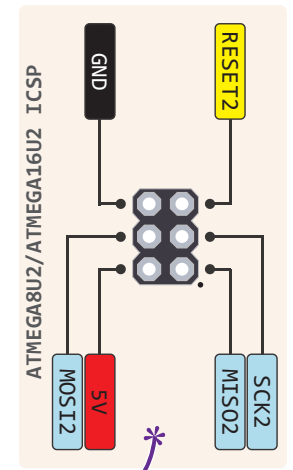
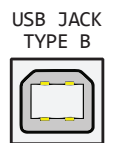
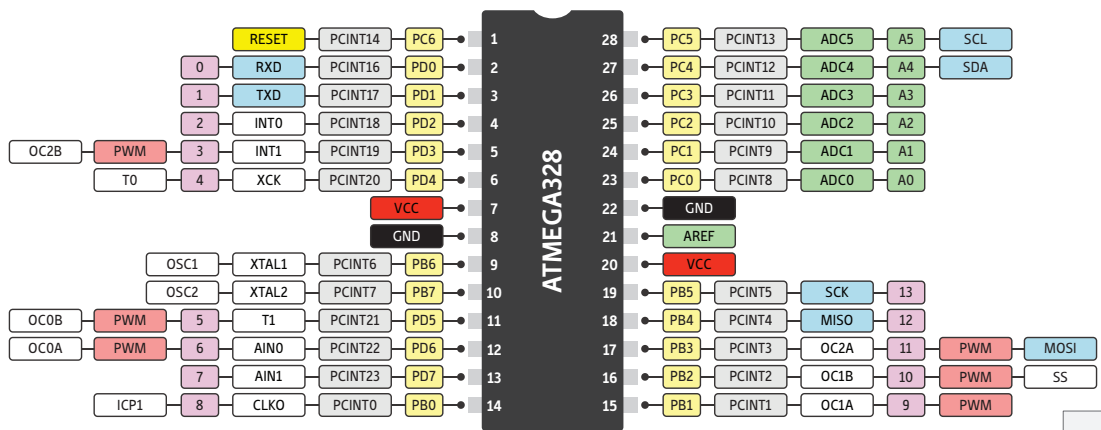


# THE DEFINITIVE ARDUINO UNO PINOUT DIAGRAM

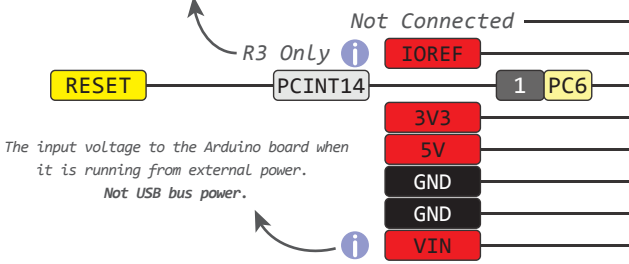
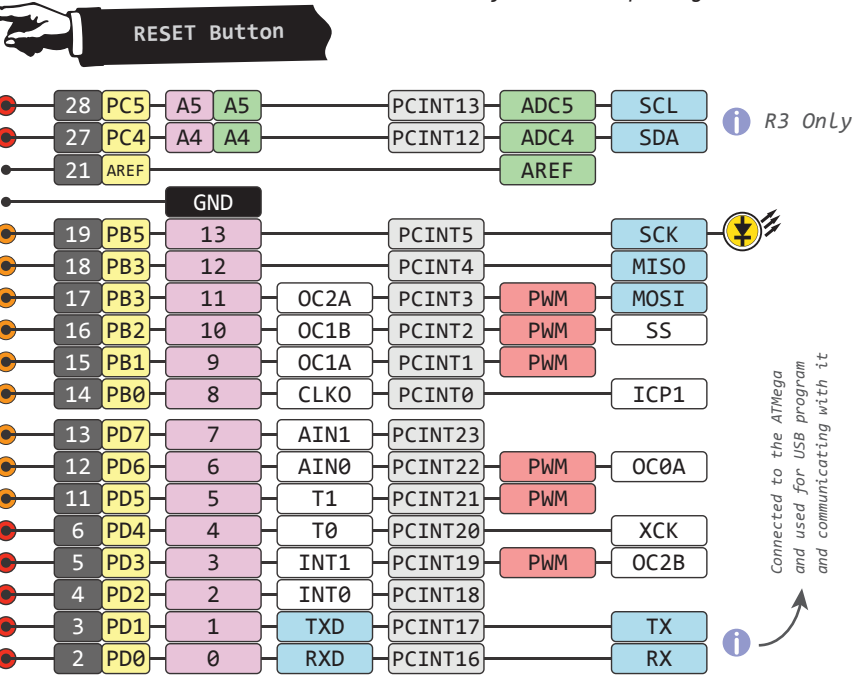
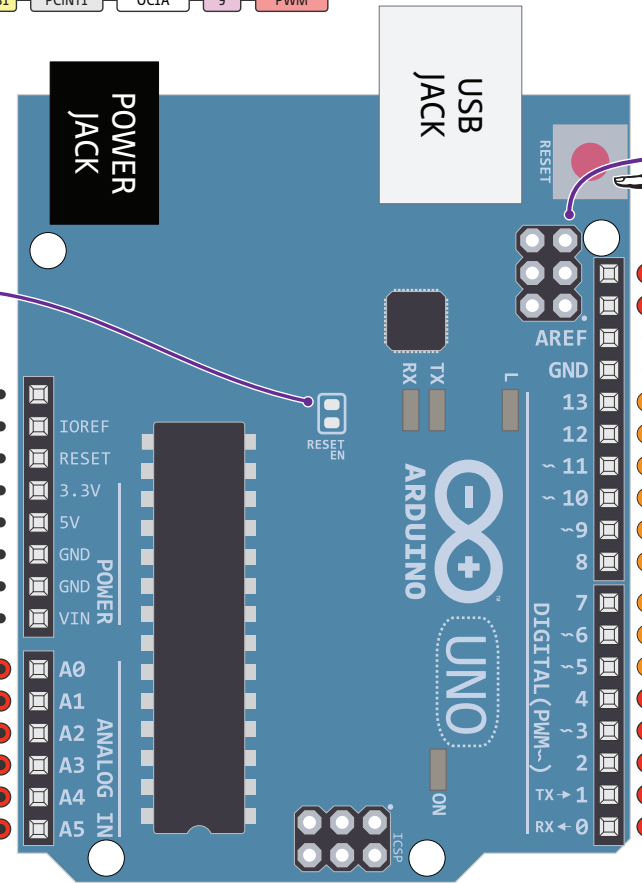


- ⚠ Absolute max per pin 40mA recommended 20mA
- 🛑 Absolute max 200mA for entire package

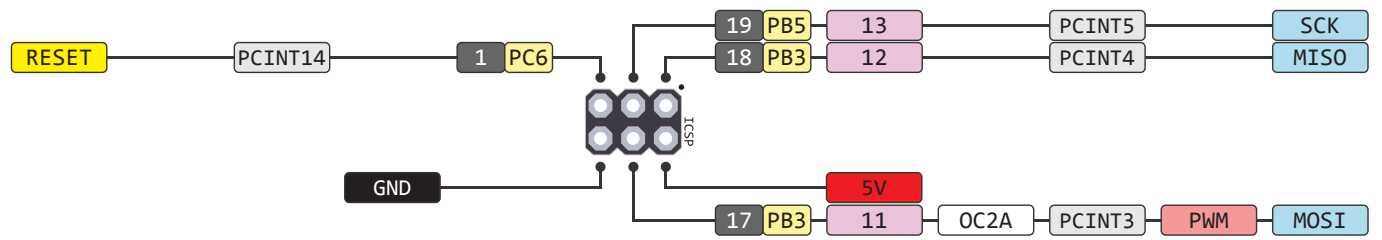


Cut to disable the auto-reset

This provides a Logic reference voltage for shields that use it. It is connected to the 5V bus.



Connected to the ATmega and used for USB program and communicating with it



- ⬛ GND
- 🔴 Power
- 🟡 Control
- ⬜ Physical Pin
- ⬜ Port Pin
- ⬜ Pin Function
- ⬜ Digital Pin
- ⬜ Analog Related Pin
- 🟠 PWM Pin
- 🟢 Serial Pin
- ⬜ IDE
- 🟡🟠 Source Total 150mA