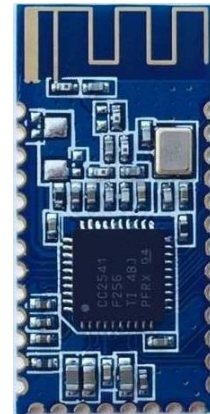


DX-BT05 Bluetooth Module

SPECIFICATION

1. Overview

DX-BT05 is a next-generation, class 2, Bluetooth 4.0 module. Support the AT command, the user can according to need to change the baud rate of serial port, name of equipment, matching parameters such as password, use agile. DX-BT05 is a highly integrated and sophisticated Bluetooth module, containing all the necessary elements. Therefore DX-BT05 provides an ideal solution for developers who want to integrate Bluetooth wireless technology into their designs with limited knowledge of Bluetooth and RF technologies.



DX-BT05 module combined with DX-SMART's complete development, testing and verification services and excellent developer support, OEMs and designers ensure that their products reach the market rapidly and cost-efficiently in relation to time and resources. DX-SMART has extensive in-house knowledge of both software and hardware offering customers a single point of contact to all Bluetooth related issues.

2. Feature

Bluetooth protocol: Bluetooth Specification V4.0 BLE, send and receive no byte limit, open environment and iPhone 4s can achieve 110 meters extreme distance communication.

Based on TI CC2541 chipset

Bluetooth class 2

Industrial level SPP Bluetooth module

Integrated chip antenna

Size: 26.7 x 13 x 2 mm

Industrial temperature range from -40°C to +85°C

Support for on-board applications

Operating frequency: 2.4 GHz ISM band

Modulation method: GFSK (Gaussian Frequency Shift Keying)

Acuity: -84 DBM or less BER at 0.1%

Transfer rate: Asynchronous: 6 KBPS Synchronous: KBPS

Security features: Authentication and encryption

Support services: Central and Peripheral UUID FFE0, FFE1

DX-BT05 Bluetooth Module

Power consumption: automatic sleep mode, the standby current 400 ~ 1.5 mA, transfer 8.5 mA.

Power supply: + 3.3 VDC 50 ma

RoHS compliant

3. Application Fields

Cable replacement

Point-of-sales systems

Barcode readers and pay terminals

Telemetry and machine-to-machine devices

Logistics and transportation systems

Automotive inspection and measurement systems

Medical systems

Fitness and sports telemetry devices

PDA and other portable terminals

PCs and laptop

OBD

4. Physical Characteristics

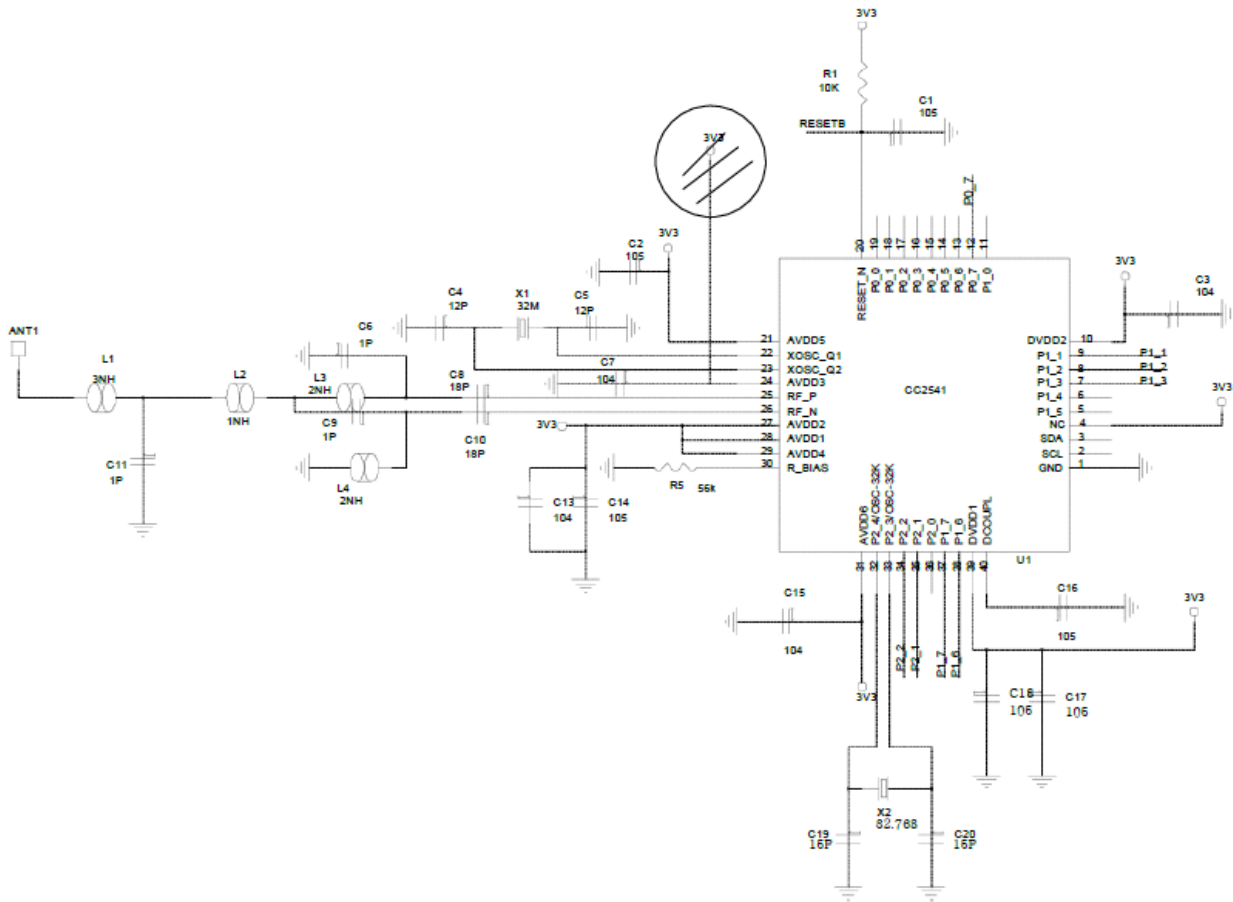
Operating Frequency Band	2.4GHz ISM band
Bluetooth Specification	BLE4.0
Output Power Class	Class 2
Operating Voltage	3.3V
Host Interface	UART
Dimension	27mm (L) x 13 (W) mm x 2mm (H)

5. Electrical Characteristics

Absolute Maximum Ratings		
Rating	Min	Max
Storage temperature	-40°C	+150°C
Supply voltage: VBAT	-0.4V	5.6V
Other terminal voltages	VSS-0.4V	VDD+0.4V

Recommended Operating Conditions		
Operating Condition	Min	Max
Operating temperature range	-40°C	+150°C
Guaranteed RF performance range ^(a)	-40°C	+150°C
Supply voltage: VBAT	2.2V	4.2V ^(b)

6. Application Circuit Diagram



Note: This application circuit for the Bluetooth serial port circuitry, such as the need for other application, please contacts us .

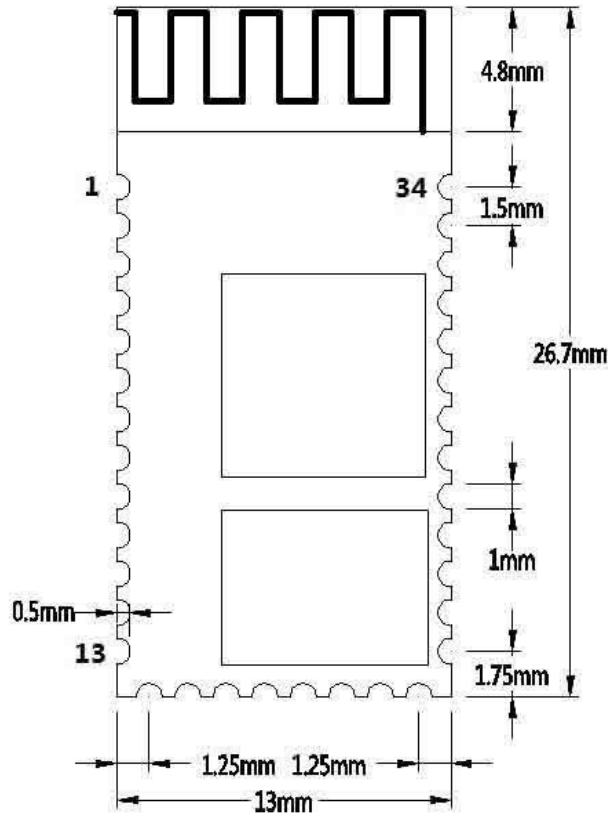
7 .Pin Configurations

PIN NO.	NAME	FUNCTION
1	UART-TX	UART Data Output
2	UART-RX	UART Data Input
3	UART-CTS	UART Clear To Send Active Low
4	UART-RTS	UART Request To Send Active Low
5	NC	NC
6	NC	NC
7	P2_2	Debug the clock
8	P2_1	Debug the data
9	P2_0	Programmable Input/Output Line
10	NC	NC

DX-BT05 Bluetooth Module

11	RESETB	Reset if low Input debounced so must below for >5ms to cause a reset
12	VCC	+3.3V Supply
13	GND	Ground
14	GND	Ground
15	SDA	Data port
16	NC	NC
17	NC	NC
18	NC	NC
19	NC	NC
20	SDL	Clock port
21	GND	Ground
22	GND	Ground
23	P1_3	SW1 system key, see Other configuration
24	P1_2	State instructions LED, see Other configuration
25	P1_1	Programmable Input/Output Line
26	P1_0	Programmable Input/Output Line
27	P0_7	Programmable Input/Output Line
28	P0_6	Programmable Input/Output Line
29	P0_5	Programmable Input/Output Line
30	P0_4	Programmable Input/Output Line
31	P0_3	Programmable Input/Output Line
32	P0_2	Programmable Input/Output Line
33	P0_1	Programmable Input/Output Line
34	P0_0	Programmable Input/Output Line

8. Contour Dimension



9. Other configuration

State Instructions LED: P1_2

Model	LED Display	Status
Slave	Even slow flash (800ms-on,800ms-off)	Waiting for matching
	Long bright	connection

Module dormancy set

Is only meaningful in from dormancy mode module, from the mode via a serial port to send "AT + SLEEP", if no accident, the module will return "OK" and enter a dormant state, this state to be found and connection status.

Wake up the module Settings

There are two ways:

Method one: you can send the length of the string is greater than or equal to 80 to activate the module. Send the activated string cannot contain the AT command, success after WAKE up, a serial port will output "+ WAKE OK" string.

Method 2: short press the system button SW1.

System key SW1(P1_3)

P1_3 for input pin, short press control, can realize the following functions:

1, the module is in a state of dormancy:

Module will be awakened to the normal state, the success after WAKE up, a serial port will output "+ WAKE OK" string.

2, the module is in a state of connection:

Disconnected module will initiate the request.

10.Layout Announcements

1, DX-BT05 bluetooth module serial level should be 3.3 V, if the connection and 5V level system need to increase the level conversion chip.

2, Bluetooth signal is highly affected by the surrounding, such as trees, metal, wall can have certain absorption on the bluetooth signal or block, so the installation is not recommended in the metal case.

3, Due to metal will weaken the function of antenna, it is suggested that Lay in the module board, don't lay GND and a line under the antenna module, it is best to hollow out.

FCC Caution.

This device complies with part 15 of the FCC Rules. Operation is subject to the following two conditions: (1) This device may not cause harmful interference, and (2) this device must accept any interference received, including interference that may cause undesired operation.

Any Changes or modifications not expressly approved by the party responsible for compliance could void the user's authority to operate the equipment.

Note: This equipment has been tested and found to comply with the limits for a Class B digital device, pursuant to part 15 of the FCC Rules. These limits are designed to provide reasonable protection against harmful interference in a residential installation. This equipment generates uses and can radiate radio frequency energy and, if not installed and used in accordance with the instructions, may cause harmful interference to radio communications. However, there is no guarantee that interference will not occur in a particular installation. If this equipment does cause harmful interference to radio or television reception, which can be determined by turning the equipment off and on, the user is encouraged to try to correct the interference by one or more of the following measures:

- Reorient or relocate the receiving antenna.
- Increase the separation between the equipment and receiver.
- Connect the equipment into an outlet on a circuit different from that to which the receiver is connected.
- Consult the dealer or an experienced radio/TV technician for help.

The Bluetooth 4.0 module is designed to comply with the FCC statement. FCC ID is 2AKS8DX-BT05. The host system using Bluetooth 4.0 module, should have label indicated it contain modular's FCC ID 2AKS8DX-BT05.

The device has been evaluated to meet general RF exposure requirement. The device can be used in portable exposure condition without restriction.